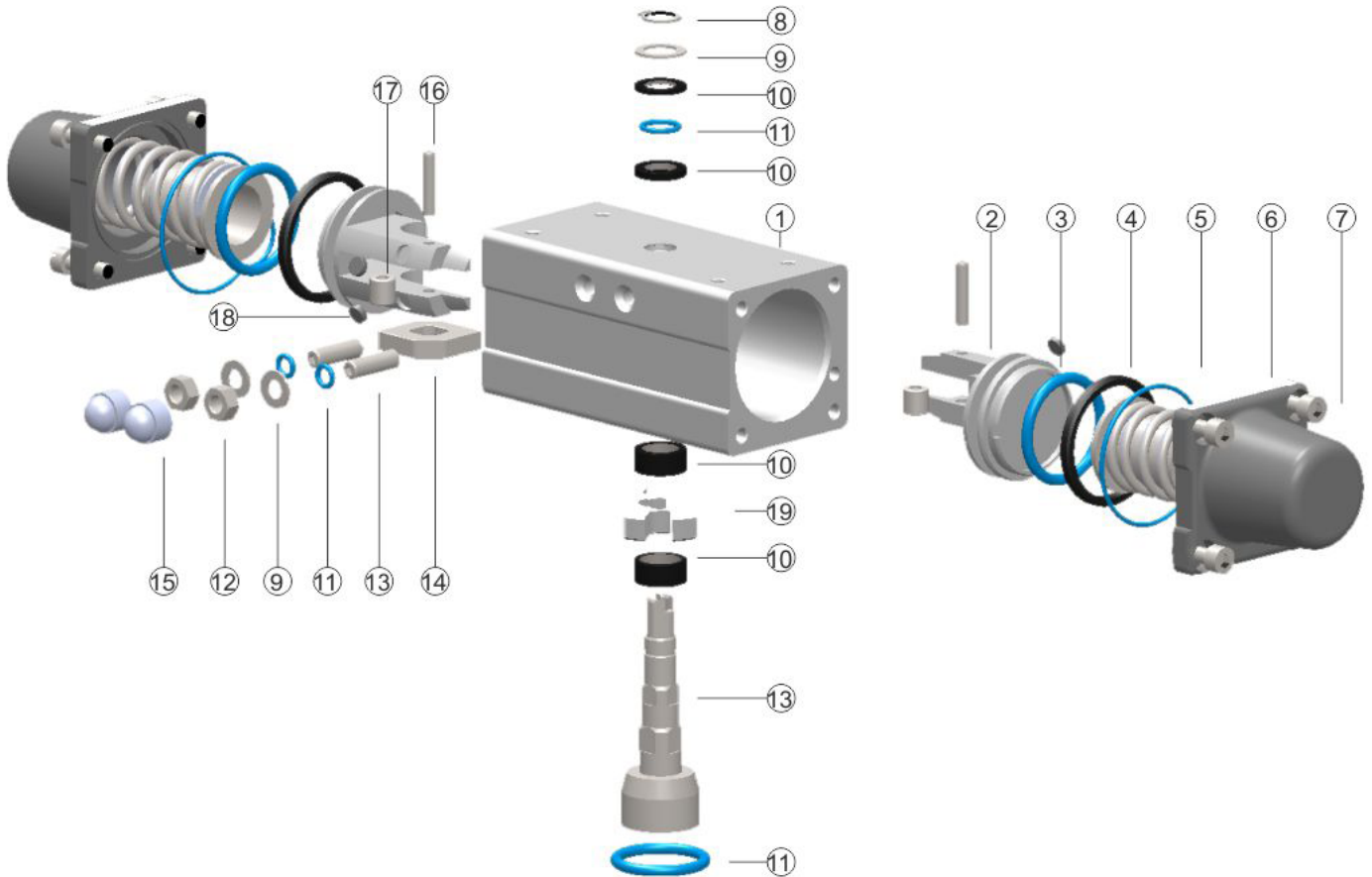


**WERKSTOFFE**  
einfachwirkende Antriebe

**MATERIALS**  
spring-return actuators

**MATERIALI**  
attuatori semplice effetto



No	Qty.	Beschreibung	Material	Description	Material	Descrizione	Materiale
1	1	Gehäuse	Aluminium EN AW 6060 T66	Cylinder Body	Aluminium EN AW 6060 T66	Corpo attuatore	Alluminio EN AW 6060 T66
2	2	Kolben	Aluminium EN AC46100	Piston	Aluminium EN AC46100	Pistone	Alluminio EN AC46100
3	2	O-Ring Kolben	Silikon 70Sh/Viton/NBR	O-ring piston	Silikone 70Sh/Viton/NBR	O-ring pistone	Silicone 70Sh/Viton/NBR
4	2	Gleitband Kolben	PTFE Kohle	Glide band piston	PTFE Carbon	Anello guida pistone	PTFE Carbone
5	2	Dichtung Endkappe	Silikon 70Sh/Viton/NBR	Sealing end caps	Silikone 70Sh/Viton/NBR	Guarnizione testate	Silicone 70Sh/Viton/NBR
6	2	Endkappe epoxy anthrazit	Aluminium EN AC46100	End caps epoxy anthracite	Aluminium EN AC46100	Testate epossidico antracite	Alluminio EN AC46100
7	8	Schrauben Endkappe	DIN921 1.4301-AISI304-A2	Screws end caps	DIN921 1.4301-AISI304-A2	Viti testate	DIN921 1.4301-AISI304-A2
8	1	Sicherungsring	DIN471 1.4301-AISI304-A2	Retaining ring	DIN471 1.4301-AISI304-A2	Anello elastico	DIN471 1.4301-AISI304-A2
9	1	Passscheibe	DIN988 1.4301-AISI304-A2	Shim ring	DIN988 1.4301-AISI304-A2	Anello di supporto	DIN988 1.4301-AISI304-A2
10	4	Gleit- und Distanzbuchsen	PTFE Kohle	Glide and distance rings	PTFE Carbon	Anello di guida e distanza	PTFE Carbone
11	2	O-Ringe	Silikon 70Sh/Viton/NBR	O-rings	Silikone 70Sh/Viton/NBR	O-ring	Silicone 70Sh/Viton/NBR
12	2	Sechskantmuttern	DIN934 1.4301-AISI304-A2	Hexagon nuts	DIN934 1.4301-AISI304-A2	Dadi esagonali	DIN934 1.4301-AISI304-A2
13	2	Gewindestift	ISO4026 1.4301-AISI304-A2	Hexagon socket set screws	ISO4026 1.4301-AISI304-A2	Grani cava esagonale	ISO4026 1.4301-AISI304-A2
14	1	Anschlagscheibe	C10	Travel stop disc	C10	Disco regolazione corsa	C10
15	2	Schutzkappe Mutter	LLD-PE schwarz	Protective cap for nut	LLD-PE black	Tappo protettivo dado	LLD-PE nero
16	2	Zylinderstift gehärtet	DIN6325 Stahl	Parallel pin hardened	DIN6325 Steel	Spina cilindrica temprato	DIN6325 Acciaio
17	2	Zylindrische Bohrbuchse	DIN179 Stahl	Press fit jig bushes hardened	DIN179 Steel	Bussola di guida temprato	DIN179 Acciaio
18	2	Gleitnoppen Kolben	PTFE Kohle	Glide support piston	PTFE Carbon	Supporto guida pistone	PTFE Carbone
19	1	Schwinge	C10	Crank	C10	Forcella	C10